



BILBOROUGH
SIXTH FORM COLLEGE

Support for Students



A Guide for
Year 12
Parents and
Carers
2022-2024

www.bilborough.ac.uk

College Way, Bilborough Road,
Nottingham, NG8 4DQ.
Tel Number: 0115 8515000



BILBOROUGH
SIXTH FORM COLLEGE

CONTENTS

| | |
|---|---------------------|
| Welcome from the Principal | Page 2 |
| Student Support Team Contact Details | Page 3 - 4 |
| Personal Tutors Contact Details | Page 4 - 5 |
| How to Contact College | Page 6 |
| The Tutoring System | Page 7 - 8 |
| The Curriculum | Page 9 - 11 |
| Supporting Learning | Page 12 - 15 |
| Working with Parents and Carers | Page 16 |
| Other Support for Students | Page 17 - 18 |
| Exams | Page 19 |
| Careers and Progression | Page 20 |
| Student Behaviour | Page 21 - 22 |
| Safeguarding | Page 23 |
| Equality and Diversity | Page 24 |
| General Information | Page 25 |
| Transport and Parking Information | Page 26 |
| Student Agreement | Page 27 - 29 |
| College Timetable | Page 30 |
| College Calendar | Page 31 |

Bilborough College

Dear Parent or Carer

We are delighted that you and your child are giving us the opportunity to help them take the next important step in their educational journey. The team here at Bilborough Sixth Form College takes very seriously our responsibility to provide an environment where students are challenged to release their full potential and create their own exciting and rewarding futures.

We know that the formula for success, whether students are studying A Levels, a BTEC Extended Diploma or a mixed programme, involves application, hard work and a positive mindset. We will do our utmost to provide the right blend of support and challenge to meet each individual's needs and give them the best chance of making this happen.

We place great value on developing a strong partnership with parents and carers from the start. In this Guide you will find important information about some of the arrangements we have made to support good communication with you. We hope it will serve as a useful point of reference over the next two years.

Moving from the familiar environment of school to another larger institution with different expectations and ways of working for students can present a challenge. Students need and deserve help in getting to know new people and discovering where to find support, in becoming familiar with new ways of studying and coming to terms with a greater emphasis on independent work. We will do all we can to make sure the transition is as easy as possible.

Personal Tutors provide support for students, as well as covering any individual questions or problems that might be raised. Please feel free to get in touch with them if the need arises via email or phone.

I look forward to seeing you in College in the near future.

With best wishes

David Shaw
Principal

Student Support Team



Jill Hay
**Director of Student
 Engagement & Progress**
jill.hay@bilborough.ac.uk



Michelle Harvey
**Director of Student Support
 Services**
michelle.harvey@bilborough.ac.uk



Monique Norcliffe
Student Support Manager
monique.norcliffe@bilborough.ac.uk



Debra Brown
Mental Health Support Worker
debra.brown@bilborough.ac.uk



Tamika Shelukindo
Wellbeing Coach
tamika.shelukindo@bilborough.ac.uk



Helen Ginns-Farrow
Welfare Officer
 Helen Ginns-
 Farrow@bilborough.ac.uk



Helen Smith
Learning Support Teacher
helen.smith@bilborough.ac.uk



Beth Lucas
Counsellor
Beth.lucas@bilborough.ac.uk



James Quested
Head of Bilborough Extra
james.quested@bilborough.ac.uk



Kirsty Lockton
Learning Support Manager
kirsty.lockton@bilborough.ac.uk



Rachel Crofts
Learning Support
Rachel.crofts@bilborough.ac.uk



Natalie Minott
Learning Support
Natalie.minott@bilborough.ac.uk



Alison Lardi
**Careers & Progression
 Manager**
alison.lardi@bilborough.ac.uk



Joanna Zielinska
Work Experience Co-ordinator
Joanna.Zielinska@bilborough.ac.uk

Careers Adviser
@bilborough.ac.uk

Personal Tutors



Joanna Tillotson
Personal Tutor
joanna.tillotson@bilborough.ac.uk



Emma Collins
Lead Personal Tutor
emma.collins@bilborough.ac.uk



Rashida Hassanali
Lead Personal Tutor
rashida.hassanali@bilborough.ac.uk



Andrew Felfoldi
Personal Tutor
andrew.felfoldi@bilborough.ac.uk



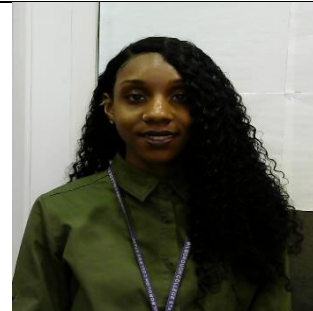
Adela Martinez-Torres
Personal Tutor
torade26@bilborough.ac.uk



Nicki Baines
Personal Tutor
nicki.baines@bilborough.ac.uk



Katie Stray
Personal Tutor
Katie.stray@bilborough.ac.uk



Caroline Waterhouse
Personal Tutor
caroline.waterhouse@bilborough.ac.uk

Selina Greaves
Personal Tutor
selina.samuel@bilborough.ac.uk



Farzana Karim
Personal Tutor
 farzana.karim@bilborough.ac.uk

Gemma Chapman
Personal Tutor
 gemma.chapman@bilborough.ac.uk



Caroline Bradshaw
Personal Tutor
 caroline.bradshaw@bilborough.ac.uk



Abii Banjoko
Personal Tutor
 abii.banjoko@bilborough.ac.uk



Ryan Sainty
Personal Tutor
 ryan.sainty@bilborough.ac.uk

Marsha Carty
Personal Tutor
 marsha.carty@bilborough.ac.uk

Will Parkin
Personal Tutor
 will.parkin@bilborough.ac.uk



Emma Walkers
Personal Tutor
 emma.walkers@bilborough.ac.uk



Lisa Francis
Personal Tutor
 lisa.francis@bilborough.ac.uk

Welcome to Bilborough College

We hope that your child is beginning to settle down to life at College and that they are enjoying the challenge of studying at this level. The transition from school to college, and from GCSE to A Level / BTEC is not an easy one and we want to do all we can to support your young person in this process.

At Bilborough College, we value each student as an individual and our aim is to help each one achieve their full academic potential through high quality teaching and student support. We hope that you find the information in this guide useful in supporting your young person as they embark on their studies.

How to contact the College

College Way, Bilborough Road, Nottingham, NG8 4DQ.

Tel Number: 0115 8515000

enquiries@bilborough.ac.uk

The email addresses of individual staff at the college follow the format of **first name.surname@bilborough.ac.uk**.

Parent / Carer CEDAR

CEDAR allows you to access secure information online including progress reports, attendance data etc about your young person. If you have not received an email with details of access, please email cedarparent@bilborough.ac.uk

Attendance and Reporting Student Absence

One major factor that affects achievement is attendance and we expect students to aim for at least 95% attendance. However, we appreciate that there may be times when students are unavoidably absent through illness. If this is the case, **only parents/carers** can notify us by using the “absence notification procedures on CEDAR”. Once we have been notified the registers will be updated with the appropriate mark. If you are unable to notify us by CEDAR you can either phone college reception on (0115 8515000) or email absence@bilborough.ac.uk. It is really important to help us manage student absences and chase up any that are not authorised. Persistent poor attendance may well lead to students being charged or withdrawn from external exams.

Please note we will not authorise holidays in term time, and we will require GP notes to cover sickness beyond 7 days. Frequent short-term absences will require a meeting with the tutor and parents.

Contacting Personal Tutors

The Personal Tutor should always be the first point of contact if you have any concerns regarding your young person’s progress. If you are unable to contact staff by email please telephone the College. A message will be passed on for the tutor to phone you back when they are available.

The College Website

The college website contains useful information about the College. CEDAR can be accessed via the website and includes copies of any generic correspondence sent home, as well as newsletters etc. The website is also used to communicate extraordinary events such as College closures due to extreme weather conditions. You can also follow us on Twitter and Facebook for the most up to date information.

The Tutoring System

Personal Tutors

The Personal Tutor should always be the first point of contact if you or your young person has any concerns, or you need to contact somebody at the College. There is a photo gallery at the beginning of this booklet with contact details. If the Personal Tutor is unavailable, you can always contact the Lead Tutor or Head of Student Services. They will deal with any persistent issues relating to attendance, commitment, health study support needs etc.

How to decipher the tutor group code e.g. 12CW e3

| | | |
|---------|-----------------------------|--|
| 12 | CW | e3 |
| Year 12 | tutor = Caroline Waterhouse | Block E3 on timetable is the time of the tutor group session. |

How do Personal Tutors support their tutees?

All students have a lesson allocated on their timetables for tutoring. This will be used to deliver vital information and a tutorial programme tailored to support students' learning and progression. There will also be scheduled tutorial 1:1 reviews. Attendance at both tutor group lessons and 1:1 tutorial reviews is compulsory.

Tutor Group Sessions

Students must attend. These sessions cover a wide range of activities, ranging from supporting the transition from Year 11, study skills, safeguarding and prevent agenda, personal safety, sexual health sessions, tax and legal responsibilities through to careers education and advice. Essential paperwork and notices will also be given out at these sessions.

The Tutoring System

Formal 1:1 Reviews

We strongly believe that the 1:1 support we provide to students is vital to their success at College. All students will have at least one formal review with their personal tutor on a termly basis. This time will be spent monitoring personal and academic progress, setting targets and discussing progression plans. Students are expected to plan in advance for these sessions and to record agreed targets afterwards as appropriate.

Supporting Students

Tutor time is a dedicated 45 min slot on the student timetable. However, we strongly encourage all students to seek out their tutor (either in person, or by email) at any point, if they have any issues or concerns. The tutor is very much the professional / critical friend who will support and walk alongside students in the two years they are here with us.

Consultation Evenings and End of Year Report

The first opportunity to meet your child's personal tutor will be at our **Parent / Carers' Introduction Evening** held at the end of September/beginning of October.

Student Monitoring System / Cause for Concern

All students sign a copy of the Student Agreement at enrolment (see page 27 - 29); if students do not keep to the agreement then measures will be put in to place to support them to get back on track.

Initially, any issues will be dealt with by the relevant subject teacher or tutor. Ongoing concerns will lead to students being dealt with in line with the student intervention process.

Intervention Process

Occasionally, staff raise concerns with regards to students' attendance, commitment and attitude, failing to meet deadlines, etc. The aim of the intervention process is to work with the student to help them to get back on track.

Please note: If a student fails to respond positively, or they have not been able to maintain their studies due to a decline in health, despite reasonable adjustments, then we will do all we can to help them find an alternative to continuing at college.

The Curriculum

All students at Bilborough College are full-time students and as such will be timetabled for a minimum of 15 hours per week. The remaining time is dedicated to independent study, and students should expect to receive around 5 hours' worth of activities to complete each week to support their in-class learning. The following sections aim to explain the structure of our range of qualifications.

A Levels

Students will have enrolled on three A level subjects or will be on a mixed programme of A Levels and other Level 3 qualifications such as BTEC diplomas. Students have the opportunity of adding one of our extended studies options to their programme of study either in year 1 or year 2. Currently these options include; Maths Studies (level 3 maths qualification), Extended Project Qualification (equivalent $1\frac{1}{2}$ A level), Trinity Guildhall Level 8 or the Trinity Gold Arts Award.

All A levels specifications are 2-year courses. Students will sit the examinations in the summer of 2024.

Throughout the 2 years there will be half-termly 'formal assessments' taking place and all students will sit 'end of year' assessments in the summer of 2023. The results from all these assessments, along with attendance and attitudes to learning, will inform their 'On Course To Achieve' (OCTA) grades and UCAS grades for university applications and for potential employers.

Success in the summer end of year 1 examinations is a good indicator of the ability to prepare for the assessments at the end of the 2 year A Level.

Applied General Courses (mainly BTEC)

If your child is not taking a programme of pure A Level courses, they will be studying a mixture of A Levels and vocational courses, such as BTECs, or a full-time BTEC Extended Diploma course. Their programme will be the same size, value and duration as 3 A Levels. Individual assessments are graded at Pass, Merit or Distinction by the teacher rather than A*-E as in A Level subjects (the one exception is Criminology, with grades A*-E).

Extended Diplomas are available in Performing Arts

1 A Level size Diplomas, and extended certificates are available in: Business, Performing Arts, Sport, Applied Science, Creative Digital Media, Digital Music Production, ICT and Criminology.

Applied General courses now all consist of externally set and marked exams and/or set tasks, as well as internally assessed coursework which is moderated by the exam boards. Exam boards have strict rules regarding meeting deadlines and working independently of other students. This is both challenging and rigorous and can take some getting used to, compared with other qualifications. All the assignments and exams must be passed to complete the qualification. The final grade for a BTEC course depends on the points scored in individual units and the number of Pass, Merit and Distinction grades across 2 years. With sufficient Distinctions, it is possible to gain a Distinction* (many students do!).

Target Grades and Achievement

There is a wealth of information about how students are likely to perform in A Level and BTEC qualifications, and the best predictors are GCSE results and attendance data. We use national GCSE data to show students the grades that they are likely to achieve on average based on their GCSE

scores, and we encourage them to set their own target grades to work towards, which should be aspirational i.e. well above average. The target grade (TG) and personal target grade are used to help students review their progress and to aim high.

This system is used by many schools and colleges and has been proven to be a reliable and effective way of providing initial targets for students. Average GCSE scores are calculated dividing the total GCSE score for a student by the total number of full GCSEs undertaken. This is then used to produce a target Grade for the student. Every subject has the same target Grade. With the disruption to examinations recently due to Covid, we are aware that these may be less reliable than in previous years and so our main focus will be on using our own assessments to maximise progress, whatever the starting points.

Target grades are not intended to limit a student's potential and we encourage students to set their own targets. Most students with high aspirations go on to exceed their target grade.

Success on a 2-year linear programme

Our courses are assessed over two years, and it is important that students know how to get the best results at the end. It is natural to focus our efforts on thinking about exams at the end of the course, but we know that the key to success is to engage in learning from the start. Our job is to help students to develop effective learning habits and build their working knowledge of each subject for two years.

We fully expect students to attend and actively participate in all lessons, put effort into homework tasks, work effectively with others as part of a team, build their subject knowledge, develop successful revision strategies, as well as develop all those skills that are specific to each subject or will improve their employability skills. E.g. problem solving, technical skills, essay writing and evaluation.

When we review student progress, we take into account all work they have done and their attitude to learning.

Progression from Year 1 to Year 2

Students are on a 2-year linear programme, the assumption is that they remain at college for the duration of their course. However:

- Students must prove themselves to be serious and committed, which is demonstrated through excellent attendance at lessons, completion of homework and coursework to given deadlines, good results in formal assessments and a commitment to our Student Expectations.
- BTEC students need to have successfully completed all Year 1 assignments.

Bilborough Extra

The College offers a wide range of activities for students outside of lessons. Enrichment activities range from sporting activities, writing for the College magazine, taking part in theatre / music productions, Duke of Edinburgh, Young Enterprise, National Citizen Service to juggling. We strongly recommend students make the most of what is on offer. There are also visiting speakers, work experience opportunities and subject workshops.

We expect all students to engage in the Bilborough Extra Programme and encourage students to participate for at least 1 hour per week. Students will log their activities on Unifrog each term and these details will strongly support progression to employment and/or university.

The Transition from GCSEs to Level 3 Programmes of Study

The **VESPA Transition Programme** is a College-wide initiative to ease the sometimes tricky transition from GCSE to A Levels/BTECs and to empower students to learn and achieve. At college, students need to work more independently and take greater ownership of their learning. They need to realise that success at this level means engaging with the learning process, both inside and outside of the classroom. They are encouraged to make good use of their non-contact time and prepare in advance for lessons and follow up work covered in lessons

Personal tutors will be helping students in this transition time to develop the skills and mindset needed to succeed at this level. Using the VESPA model: -

| | | |
|-----------------|---|---|
| Vision | ➔ | Do you know what you want to achieve? Why are you studying A Levels? What grades do you want to achieve in your A Levels? What career are you interested in? |
| Effort | ➔ | How many hours of independent study do you do? How do you compare to the most committed students in your year group? |
| Systems | ➔ | How do you organise your learning and your time? Do you have any study or time management methods or techniques to draw on? |
| Practice | ➔ | How do you practice to improve your study skills? How do you practice to improve your time management? |
| Attitude | ➔ | How do you respond to setbacks? How do you respond to constructive criticism? How do you overcome setbacks or adapt your plans? |

Supporting Learning

Assessment of Learning and Progress

Homework is set on a weekly basis so that students are consolidating their learning, researching topics or testing their knowledge and skills. This work is crucial in helping students recognise the standard of their work and for teaching staff to direct students as to how to improve. It is expected that your young person will complete the assignments on time and to the best of their ability. We know that students who put effort into their homework gain better exam grades than those who do not and we expect to set around 5 hours a week of activity for each course.

Subject teachers track homework progress carefully and systematically follow up non-completion. Homework will be set as an assignment in Microsoft TEAMS and so there is no excuse for not knowing what has been set. Continued failure to do homework may result in a student being required to pay for their own exam entries.

We are serious about homework and expect students to be serious too. We trust you will support us in reinforcing this policy.

What counts as homework?

- Formal written assessed tasks e.g. answering questions, essays, past papers.
- Preparatory work for forthcoming lessons and assessments.
- Review of work already covered.
- Wider reading / researching
- Creative and collaborative group tasks
- ...and so much more.

College Coursework Policy

Coursework or Non-Exam Assessment (NEA) is an integral part of formal assessment for many courses. All coursework must be handed in by the pre-arranged College deadlines and these are **non-negotiable**. If students are ill on the deadline date they need to inform the College immediately and obtain a doctor's letter. We accept that there are a small number of very exceptional circumstances that justify an extension to the deadline date.

Students should seek advice from subject staff should they wish for an application for an extension to be considered. This extension needs to be applied for at least 10 days in advance and should be supported by parents. (Draft Coursework dates are published in advance by courses).

BTEC Course Policies

As these courses consist largely of assignments graded by teachers, the exam board sets out rules to ensure that assignments are taken seriously by teaching centres and students. Work is assessed against criteria and this leads to a Pass, Merit or Distinction for each piece of work. Each student receives a course handbook to explain the rules and we would advise you to read this to help support your child. The key points to take note of are:

- Students take part in lessons to prepare them for completing an assignment successfully and understand the criteria. Each assignment has a deadline and students are allowed one submission. If students have met the deadline and it is judged that they can improve without further guidance, they may be allowed one re-submission. They then have another deadline to meet to improve their work. Once they submit this work, they cannot have any further attempts.

- If a student does not pass the assignment after a re-submission or they miss a deadline, they are required to complete a brand-new assignment (called a re-take) based on the same criteria, with one submission and are limited to a Pass. If they don't pass, then they fail the unit and, in most cases, the entire course. We will write to you if your child requires a re-take.
- Students must sign a statement for each assignment to verify that the work is their own. Teachers will check that sentences and paragraphs are unique by using software that compares their work to material on internet sites and the work of other students. There are sanctions if work is found to be unoriginal. Repeated plagiarism leads to failing the qualification.
- Students should discuss deadlines with teachers and exceptional circumstances are taken into account. If workload becomes high, then students can be tempted to take shortcuts and use other people's work to meet deadlines. We can only help if they let us know in advance that they are struggling.

Subject Support

All subject departments offer subject support sessions in addition to normal timetabled lessons.

The availability of these sessions is made known to all students through individual subject departments and we strongly recommend that students make good use of this support. Students who do, usually get better grades.

We also recommend that students use subject support to enable them to achieve their full potential in assessed homework.

Some students will be allocated a time to attend subject support, for example if they are currently working well below their target grade or achieved below what was expected at A Level. If a time is allocated it is expected that they attend.

Staff Absence

When teaching staff are absent, the College makes every effort to ensure that students have work set for them to do.

We do not use agencies to cover short term absence due to the specialist expertise needed at this level. We find it more effective to rely on our own staff and the ability of students to work independently.

When staff are out of College for a planned absence, on a training course or a College related visit, work is set in advance. If students mention "cancelled lessons" this will not mean they have no work to do, as we expect students to work independently and they will have been informed of what they are expected to do.

In cases when an extended period of staff absence for illness occurs, the College makes formal arrangements and set procedures are put into place.

Accessing College Devices, Internet and email

The Internet is an extremely valuable educational resource and the College is committed to providing access to it and to developing students' familiarity with information technology and its many applications.

Each time students log on to a computer they are asked to accept the College rules for the use of our computer systems.

All access to any college device and the Internet is closely monitored and the rules make it clear how seriously the College would regard attempts to access unacceptable material. This also proves to be a useful strategy to ensure safeguarding.

Students also have an email account at College and are encouraged to use this as a method of communication with staff. Students are required to check their college email daily so as not to miss any important information.

If your young person requires advice re the use of college systems, photocopying, scanning etc please ask them to speak with student support, their tutor or helpme@bfmt.ac.uk

SharePoint

Is our Learning Environment which can be accessed from all PCs in College and home via the College website.

SharePoint contains course materials including course outlines, materials from lessons, past papers and extension materials. Students should access this regularly as part of their learning programme. Some subjects have discussion forums and some homework can be submitted online. Subject areas usually contain useful links to other learning websites.

Why not get your child to show you?

Subject Progress Reviews

Students will be required to evaluate their own progress in all their subject areas. Staff regularly monitor student performance and will hold progress reviews with students. These may be more frequent if it appears that they are underperforming or struggling. In the Spring term there will be a review evening when you will be invited to accompany your child to discuss their progress in individual subjects.

Formal Assessments/Data Collection points

Student work in all subjects is assessed regularly throughout the 2 years, with a mixture of peer assessment, teacher assessment and formal assessments in subjects that have external examinations. Progress to date is summarised with an OCTA (On Course to Achieve) grade.

1. 1st OCTA grade 17th October 2022
2. 2nd OCTA grade by 14th December 2023
3. 3rd OCTA grade 8th February 2023
4. 4th OCTA grade 29th March 2023
5. Final OCTA grade Y12 24th May 2023

It is vitally important all students take these assessment opportunities seriously.

Independent Study

It is the College's expectation that all students build up to an average of 5-6 hours per week completing homework and independent study for **each** of their subjects/units of work. Students will not succeed at this level unless they can adjust to this; highly successful students tell us that they regularly study for over 20 hours a week. Some of this work will need to be completed at home but most students have at least 10 hours of study time in the week's timetable. We expect them to make good use of this time and the facilities within College to ensure they reach their potential.

The Library and Information Centre (LIC) is open from 8.30am – 4.30pm Monday to Friday and we strongly advise students to make good use of the facility and the many resources available. There is also a **Study Room** and **Study Zone** where students can work when not in lessons. Sometimes a teacher will specifically timetable students to attend certain Study Room sessions. This is intended to help support the students in developing good independent study habits. Students can also drop in and use the facilities at any time when they want a place of peace and quiet to focus on homework or independent study. Study Zone facilities are available up to 6pm Monday to Friday. However, students will then have to make their own travel arrangements for getting home.

Working with Parents and Carers

The College expects that students will accept responsibility for their own learning and academic progress. Nevertheless, there is a continuing role for parents to play in supporting that progress and the College will liaise with parents at all times, taking into account the needs and wishes of individual students.

The College Provision

You can expect the College to provide:

- A parents' and carers' information booklet explaining how the College functions.
- A personal link with the College via your child's Personal Tutor.
- An invitation to accompany your child to their annual Consultation Evening.
- Contact from the Personal Tutor should the College become concerned about your child's attendance or progress.
- An appointment with the tutor if either you or we need to discuss any aspect of your child's progress.
- Copies of the College's complaints procedure, on request.
- Access to certain information on CEDAR e.g. attendance, timetables etc.

Your contribution

- To be aware of the contents of the Parents' and Carers' Handbook and other College documents.
- To inform us if you become concerned about any aspect of your child's progress.
- To inform us of any changes in personal circumstances, for example change of address, telephone number or domestic situation.
- To contact us concerning absences for your child from the College.
- To avoid taking holidays in term time.

Parent/Carer Voice

It is important to us that you have the opportunity to give us your views on all aspects of college life and that those views should have an appropriate response. There are several ways that your views can be heard, including:

- Directly to appropriate staff
- By responding to any questionnaire which may be sent to you or which you may be asked to complete

We hope that your young person will be happy and successful at College and that you will also be satisfied with our support systems.

We promise to listen carefully to any concerns or complaints which you may have about the College. If you should be dissatisfied, an informal approach to the Personal Tutor or to the Director of Student Support Services may help to resolve the matter. You may also write directly to the Principal.

Email:

Director of Student Support Services: michelle.harvey@bilborough.ac.uk

Principal: david.shaw@bilborough.ac.uk

Other Support for Students

Learning Support

Kirsty Lockton is the Learning Support Manager.

Learning Support offer support to students who might have specific learning needs such as Dyslexia and Dyspraxia and students with long-term physical health conditions. Reasonable adjustments are made for all students with identified support needs to ensure access to the curriculum. Where appropriate, students receive a summary of strategies to develop throughout their studies and to prepare for the future. Support can be offered through the Learning Support Study Room as an opportunity to practice and develop skills.

If a student has previously had exam arrangements they **do not** automatically follow them here to College, once a student has disclosed a previous exam arrangement or learning need we will arrange to complete appropriate testing with them to ensure the exam arrangements are in place at Bilborough.

Further information can be obtained from Kirsty, please email kirsty.lockton@bilborough.ac.uk

Health and Welfare Issues

Helen Ginns-Farrow is the Welfare Officer.

She has a wealth of information to support, advise and guide students through their time at college. She is based in Student Support, she is easy to find, and you don't need an appointment.

As well as advice on bursaries Helen can support students who live independently, are parents, are in care or care leavers and students who are young carers. She also has contacts with many organisations outside of college.

Tamika Shelukindo and **Debra Brown** are the Wellbeing Coaches.

They offer mental health and wellbeing support in college, as well as support to attain excellent academic progress. The issues and needs addressed include; anxiety, depression, eating disorders, self-harm, suicide ideation, and others. The Wellbeing Coach also works with students lacking in motivation, difficult family circumstances and stress.

NB This support is offered as part of the intervention procedures of the Health Study Support Plan (HSSP, see below).

Student Counselling Service

The College has a team of College Counsellors. This is a confidential service. Students can make a self-referral by email or they can ask their Personal Tutor or student support to do so on their behalf.

First Aiders

If students feel unwell during a College day they should report to the main reception. There are medical rooms and a number of College staff who are qualified First Aiders and work to a weekly rota. The College does not employ a nurse and First Aiders are unable to dispense painkillers. Students must not go home when feeling unwell without first seeing a member of staff. This is important so that we can ensure their welfare before they leave College premises.

Health Study Support Plan (HSSP)

We are committed to tailoring our education to individual needs and promoting inclusivity and equality of opportunity. However, it is important, to be clear about what is reasonable in an educational setting and the limits to the individual support that can be provided within a sixth form college. Our staff provide outstanding care for all students, but there will be times when a student's

physical or mental health are so affected that they are no longer able, despite the support provided both within the College and externally, to maintain reasonable academic progress.

Ideally, a clear consensus would always emerge about the best way forwards, but this will not always be the case. There will be occasions where the College believes that it has exhausted the support options available, it has made reasonable adjustments in all aspects of College life, but the student is unable to maintain their fitness to study. These situations impact negatively both on the student, since their welfare is at risk, and on the College, since there is an excessive demand on resources. If the College reaches a decision, after consultation with the student, parents / carers and medical professionals, that a student should withdraw then this will be actioned. In these situations, we would always assure students and their parents or carers that the best interests of the individual student and their welfare are at the centre of decisions. A full copy of the Fitness to Study policy, which is issued when the HSSP is first established, can be obtained from the Student Support department.

Bursary Fund

A limited amount of funding is available to assist those students on total household incomes of £27,500 or less (+£1000 for each additional dependent under 18). Free college meals for income under £16,190. All bursary students are eligible for a laptop loan during their period of study with us. Please follow this [link](#) and complete the application process. Please call 0115 8515816 if you require further information. Our Bursary Policy and Guidelines can be found on the College website.

Exams

Few people look forward to examinations, but they are a pivotal part of College life. It is essential that students are aware of all examination arrangements relating to their course.

The College provides students with all the necessary information but ultimately students must take responsibility for making sure that they are entered for the right examinations, that they turn up in the right place at the right time and that they abide by the rules and regulations associated with each examination.

STUDY LEAVE Year 13

Students on BTEC courses continue their programme of study until the end of June 2024.

Formal teaching for exam-based courses finishes just before the start of the external exam period. Some students opt to revise at home using guides and learning resources provided by teachers and staff are happy for students to do this if time is used effectively. However, the college does run a structured revision programme during the exam period. Class teachers are available during normal lesson time to help and support students in their examination preparation and will also support via email.

Entry for Exams

The College pays for entries but if a student's attendance falls below 90%, we reserve the right to withdraw the student from exams and / or charge for entries.

Students are required to check provisional statements of entry printed by the College and those issued by the Awarding Bodies and have the responsibility to inform the College of any errors or omissions.

Cheating in any examination, internal or external, or in assessed coursework is regarded by the College as a serious matter. Cheating may result in disqualification by the awarding body concerned. The term "cheating" covers a wide range of breaches of the regulations, including possession of mobile phones, notes in an examination and plagiarism in coursework.

The Rules and Regulations governing a particular examination are always made clear to candidates and must be strictly adhered to.

The College Examination Officer can be contacted on 0115 8515000 extension 2036.

Careers and Progression

Careers Team Support

The Careers Team are located in the Student Support Services area within the College. Students can book individual careers appointments with our Careers Adviser and can drop in to chat to our Work Experience co-ordinator. We make good use of the Unifrog platform, where students can research university and apprenticeship options, record activities they have done and the employability skills they achieve, and access information on careers linked to their subjects. There is specialised support for students interested in Medicine/Veterinary Science/Dentistry, and for students interested in applying to Oxford and Cambridge.

Each year we hold an Apprenticeship Evening in January/February, a Higher Education Information Evening in conjunction with Nottingham Trent/Nottingham Universities in April/May. Many other events, talks and visits are organised throughout the year covering university and other higher education choices, apprenticeships and employment options, to ensure our students make informed choices. We host a Careers and Higher Education fair in college each year.

Personal Tutors work closely with individual students on career and progression planning, and teaching staff embed careers in the curriculum into their schemes of work. We regularly put information on the website to help you support your child whilst at college, but we are aware that the options available are confusing. Students and parents are welcome to contact us at any time with any questions, you can request your own log on for our digital platform 'Unifrog' to access information about progression options. If you are interested, please email alison.lardi@bilborough.ac.uk to request log on instructions.

Work Experience

In the past twelve months, many students have accessed work experience opportunities. One of our expectations is that all students take part in relevant work experience during their time with us. Our Y12s take part in our Work-related Experience and Progression (WREP) Week in May, which is face to face and virtual and involves many local and national employers and universities, as well as curriculum-based progression activities. (If any of you feel that you could offer work experience to our students, please contact Joanna.Zielinksa@bilborough.ac.uk). This all helps to widen access to opportunities for all students, and make sure that they make an informed choice once they leave Bilborough College.

Student Behaviour
The Bilborough Core Expectations

CURRICULUM EXPECTATIONS: All students will...

All students will..

| |
|---|
| <ul style="list-style-type: none"> • Have a workbook, a folder or an e-portfolio (and bring appropriate sections to every lesson) which contains the following; <ul style="list-style-type: none"> a. Key course information (booklets, glossaries, mark schemes, etc). b. Evidence of sufficient, recently completed homework. c. A feedback / improvement sheet which records any comments from teachers (both written and verbal) and where students set targets to make improvements. Students will complete this sheet after each piece of formal written feedback and ideally whenever feedback of any sort is given. d. Notes and feedback from subject reviews. |
| <ul style="list-style-type: none"> • Complete at least 5 hours homework per week for each subject studied |
| <ul style="list-style-type: none"> • Engage fully in lessons, participating actively in the tasks set and completing them all to the very best of their ability. |
| <ul style="list-style-type: none"> • Attend all subject support sessions and study room sessions when directed by staff. |
| <ul style="list-style-type: none"> • Ideally maintain a 100% attendance record and understand that the consequences of falling below 90% attendance will be a letter home and ultimately being asked to pay for examination entry where continued poor attendance has not been authorised with a valid reason. Be punctual for all lessons |
| <ul style="list-style-type: none"> • Engage honestly and openly with any surveys, questionnaires or focus groups relating to the course. Inform tutors and subject teachers of any possible barriers to their success in order that all parties can work together. |
| <ul style="list-style-type: none"> • Expect to be placed on a curriculum contract or a tutor contract if they are unable to manage the above and understand that they can be asked to leave college if they get onto a level 3 SLT Intervention and are making insufficient progress in fulfilling the above requirements. |
| <ul style="list-style-type: none"> • Engage fully with the tutorial programme by attending and fully participating in all 1:1 reviews and tutorial sessions |
| <ul style="list-style-type: none"> • Complete at least 2 enrichment activity each year. |
| <ul style="list-style-type: none"> • There is an expectation that all students engage in work experience opportunities. |

Other Student Expectations

Students who attend College do so voluntarily. Having opted to join Bilborough they must accept responsibility for their own actions and progress. A signed Student Agreement (see page 27 and 29) commits students to the standards of behaviour we expect for students. Our aim is to be a friendly learning community. Students and staff are expected at all times to treat everyone with respect and courtesy.

Health and Safety

Students are required to exercise personal responsibility for the safety of themselves and others. They must take particular care and be aware of the safety issues concerning balconies.

Student lanyards

Both students and staff **must** wear their ID lanyards at all times. Students must show their ID to any member of staff if requested. If a student forgets their lanyard, they can obtain a temporary one from reception. If the ID and lanyard is lost or stolen, then a replacement must be purchased. The present cost for a replacement ID card is £2.50 and replacement lanyard is £1. Students who persistently forgetting their lanyard may receive a disciplinary.

Smoking, Drugs and Alcohol

Students must not have in their possession, or consume, alcohol or drugs on the College site, or enter the College having consumed alcohol or drugs. Immediate suspension and disciplinary action will follow if this occurs.

This excludes students who need to carry or consume prescription drugs for medical reasons. The Learning Support Team need to be aware of any students in this category.

The College strongly discourages smoking. However, we are aware that some students do smoke and in order to avoid any potential safety issues with students smoking off site we have a designated smoking area which students must keep to. Please note that the Welfare Office in Student Support can provide information on agencies that help students should they require support to stop smoking.

College property

Students are expected to treat all College property with respect and will be asked to make good, or pay for making good, wilful or careless damage. All litter should be placed in the bins provided. If all students act in a responsible manner, the College remains a clean, tidy and healthy community for all.

All books, equipment and other materials issued to students on loan become the responsibility of the student, who is expected to return them in good condition. Loss or damage, other than normal wear and tear, will be charged for at the actual cost of repair or replacement.

Safeguarding

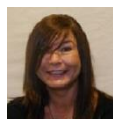
Bilborough College is committed to safeguarding and promoting the welfare of young people and expects its staff and those associated with the college to share this commitment.

The college does its utmost to actively promote Safeguarding and Wellbeing. We will not tolerate bullying or harassment of any kind. Student awareness raising sessions are carried out as part of the tutorial programme. In addition to advice on all aspects of Wellbeing, sessions will deal with bullying, harassment and cyber bullying. Your child will also receive information relating to the Prevent Duty and extremism and radicalisation, FGM, County Lines, healthy relationships as well as Child Sexual Exploitation. We encourage students to share with us any concerns they have about their own wellbeing or that of another student. Likewise, if you have concerns regarding the safety/wellbeing of your child or any other student in college then please contact a member of the Safeguarding Team.

Parent/carers and safeguarding

Parents are issued with a **parent/carer safeguarding bulletin** at regular intervals throughout the year. In addition, Parents have the opportunity to attend **online live safeguarding events** throughout the academic year. If you are unable to attend, you can watch a recording of the event on the college website. Topics last year included, Harmful Sexual Behaviours (peer on peer abuse), Mental Health, Online Safety and What a parent/carer should know about Pornography. If you would like to suggest a particular safeguarding issue, please email michelle.harvey@bilborough.ac.uk and we will try to accommodate requests.

The named persons to contact regarding safeguarding are:



Michelle Harvey – Designated Safeguarding Lead
Telephone - 0115 8515000 Ext 1056
email: michelle.harvey@bilborough.ac.uk



Helen Ginns-Farrow – Deputy Safeguarding Officer
Telephone – 0115 8515000 Ext 2016
email: Helen.ginns-farrow@bilborough.ac.uk



Monique Norcliffe – Deputy Safeguarding Officer
Telephone – 0115 8515000 Ext 1065
email: monique.norcliffe@bilborough.ac.uk



James Quested – Safeguarding Officer
Telephone – 0115 8515000 Ext 3204
email: james.quested@bilborough.ac.uk



Emma Collins – Safeguarding Officer
Telephone – 0115 8515000 Ext 2067
email: emma.collins@bilborough.ac.uk



Helen Smith – Safeguarding Officer
Telephone – 0115 8515000 Ext 2040
email: helen.smith@bilborough.ac.uk



Selina Greaves – Safeguarding Officer
Telephone – 0115 8515000
email: selina.greaves@bilborough.ac.uk

Or by asking for one of the above on Tel: 0115 8515000.

Useful Websites:

Harmful Sexual Behaviours - **Contact the NSPCC Helpline** on [0808 800 5000](tel:08088005000) or by emailing help@nspcc.org.uk.

Prevent - Act Early' safeguarding website <https://actearly.uk/>

<https://www.gov.uk/report-terrorism>

[How can the Nottinghamshire Prevent team help me?.](#)

Online Safety

<http://ceop.police.uk/>

<http://www.thinkuknow.co.uk/>

<https://nationalonlinesafety.com/>

Young Minds – Parents Helpline

<https://youngminds.org.uk/find-help/for-parents/parents-helpline/>

Shout 24/7 Free , confidential, anonymous service – text support to get you to a calmer and safe place <https://giveusashout.org/>

Wellbeing <http://www.nhs.uk/Tools/Pages/Wellbeing-self-assessment.aspx>

Equality and Diversity

- At Bilborough we value every individual who forms part of our College community. We aim to create an environment in which people treat each other with mutual respect regardless of age, disability, gender reassignment, marriage and civil partnership, pregnancy and maternity, race, religion or belief, sex, sexual orientation

As a College we are committed to eliminating discrimination and encouraging diversity amongst our workforce and our students.

- We will aim to eliminate discrimination, harassment and victimisation against anyone with protected characteristics
- We will advance equality of opportunity and foster good relations between all members of the College and the communities we serve
- We will promote awareness of Equality and Diversity issues through curriculum Delivery
- We will monitor all aspects of our provision with the aim of continuously improving equality of opportunity
- We will actively challenge expressions of prejudice and take action to stop discriminatory practices or behaviour
- We will provide appropriate learning support for all those students identified as being in need of it
- We will continue to develop ways of encouraging students from protected groups to apply to the College
- We will seek to appoint staff and governors to reflect the diversity of the community we live in
- We will actively promote the use of Bursary Funding to increase student engagement

General Information

College Hours / Timetable

Lessons take place from 8.50am to 4.10pm. The College Refectory opens at 8.30am. College facilities are only open to students when staff are available to supervise. Sports activities and performance rehearsals regularly take place after College hours. Students are strongly encouraged to use College facilities during study blocks.

Fees and Expenses

Essential text books and materials are provided free of charge, unless they are kept by the student after the course or annotated for use throughout. Students are expected to pay towards the cost of field trips and visits, although the charges for these are kept to a minimum.

Examination fees are normally paid by the College. However, if attendance falls below 90% then the College reserves the right to withdraw or charge the student. Any resit examinations must be paid for by the student.

Mobile Devices

Students who bring such items into College do so at their own risk. They must be switched off in all lessons, in study facilities and on College visits, unless students have been given specific permission to use them. In other parts of the College, i.e. the refectory, they may be used in a manner that does not cause annoyance to others. They must not be taken into any examinations.

All mobile devices can log onto the college wireless network.

Insurance

The College Corporation will not accept liability for loss or damage to private property or personal belongings whilst on College premises other than that which arises through the negligence of the College or its employees. Students should make their own provision for all their property for example by "all risks" insurance. In particular, bicycles should be insured as well as padlocked.

Student Executive

The College is affiliated to the National Union of Students. Every year the Student body elect an executive committee which organises a number of social events for students. Any parties organised by the Student Executive are **student affairs and not Bilborough College events**. We would like parents and carers to be aware of this as College staff do not attend or supervise these events. If your child mentions Bilborough College parties, you need to know this means "Student Executive" parties!

Transport and Parking Information

Visiting the College

If you have an appointment at the College, you will be able to park in the College car park as there are a limited number of parking spaces reserved for visitors, including disabled parking bays, situated near the main entrance.

Dropping off and picking up students

We **strongly recommend** that students are dropped off and picked up in the lay-bys on Bilborough Road. College Way is a busy road at the start and end of the day and can easily become congested.

We would prefer you not to stop at the mini roundabout at the College gates to drop students off, as this tends to cause severe disruption to traffic flow, and is likely to cause accidents. If you have to drop off or pick up in the neighbouring estate, we ask that you do so with due consideration for our neighbours, by not parking across driveways etc.

Student Parking

There is **no** student parking available on site and the College strongly recommends the use of public transport or College buses. Parking in the local area is not recommended and is done at the students' own risk. College takes no responsibility for any loss or damage to any vehicle.

If students do choose to park locally we ask again that they show full consideration for our neighbours, avoiding driveways and double parking.

Bus Information

The College buses are run by Skills Coaches. We aim to offer a convenient, reliable and friendly service. However, please be aware that factors outside our control, such as traffic conditions, weather and accidents, may occasionally cause delays. In these circumstances we aim to keep students updated by text message.

Copies of the current College bus timetables can be found on our website. Should you have any issues or concerns regarding any of the College bus services, please contact reception on: tel: 0115 8515000 email: reception@bilborough.ac.uk

Details of public service buses can be found on www.triptimes.co.uk

Student Agreement

At enrolment your young person signed the following agreement:

Student Agreement and Code of Conduct

Student Name:

Section A – Student Expectations

At Bilborough we have high expectations of all our students. We want to work with you to ensure that when you leave us you have achieved your potential at this stage of your education and have enjoyed your time with us. We want all in the college to enjoy working in a purposeful and adult environment and to establish positive working relationships with each other. We pride ourselves on the ethos and culture of the college. Staff and students share responsibility for creating this positive learning environment. As members of the college community we require all students to abide by the following code of conduct

To show consideration and respect for others and for the College environment.

- Speak to **all** members of the College community and visitors to the college with respect and behave in an appropriate and courteous manner.
- Treat the College premises with respect and use College resources sensibly.
- Keep the College tidy and put litter in bins provided.
- Respect the rules governing the use of lifts (students can only use them if they have a valid lift pass)
- Respect the rules governing the use of the LIC/ Study Zone and breakout areas in college acknowledging that these are private study spaces for students not in lessons (eg mobile phones on silent).
- Smoking (including e-cigarettes) is not permitted anywhere on the college site, except the designated smoking area.
- When using social media behave in a courteous manner, respecting the privacy and feelings of others at all times and do not transmit communications or images which may cause distress.
- Be respectful of the community in which we live – e.g. if you drive to college be sensitive about where and how you park and how you interact with local residents.
- Celebrate and respect individuality and diversity
- Maintain an appropriate dress code for college

To help ensure a safe and secure learning environment.

- Wear your College lanyard with ID card at all times.
- Do not invite non-students onto the college premises. If you are bringing visitors in for a legitimate purpose, ensure they are signed in at reception and wear a visitor's badge for the duration of their visit.
- Act at all times in accordance with the college's policies and expectations, including health and safety policy, acceptable use of IT, anti-bullying and equality, diversity and inclusion, coursework and plagiarism
- Do not have in your possession: - weapons or anything that can be used as an offensive weapon; alcohol or controlled substances.

- Do not enter the college site or participate in college activities under the influence of alcohol or drugs.
- Do not climb over the perimeter fence into the college grounds, enter only by the gated entrance.

To accept responsibility for your own learning

- Attend **all** timetabled lessons and tutor sessions. Less than 95% attendance could lead to you being asked to pay for exam entries.
- Attend subject support and study room sessions as directed.
- Participate in Bilborough Xtra activities (enrichment/ careers related) – expectation is to attend a minimum of 2 enrichments per year.
- Participate in work experience activities.
- Arrive on time at the start of all classes.
- Ensure you are properly equipped (eg files, pens, stationary etc) and appropriately dressed (no hats, coats in class unless there are good reasons for doing so) for lessons.
- Mobile phones should always be switched off in lessons unless otherwise instructed by staff member
- Engage fully in lessons, actively participating in all tasks set.
- Organise your time effectively, complete all work to the best of your ability and by set deadlines.
- Complete at least 5 hours homework/assignment completion per week for each subject/ unit studied.
- Check college emails daily - they are an important part of college communication
- Keep to any local rules drawn up by curriculum areas (e.g. food/drink)
- Ensure that College activities take priority during the college day and any part-time work you undertake does not clash with College commitments. You should work no more than 15 hours per week outside of college.
- Don't take holidays in term time and avoid making personal appointments in lesson time.
- If you are too ill to attend college, parent/carer will either certify absence on CEDAR, telephone or email to inform attendance each morning of absence.

Section B – Consent to contact home

We believe it is important to maintain contact with your parents/carers as they continue to support you in full time education. This means we will provide them with access to certain information e.g. attendance & OCTA grades using our online system. We will also invite them to accompany you to Consultation Afternoon/Evenings, and also send newsletters etc. Staff will also contact them if we have any concerns about your commitment or progress which we feel we have not been able to resolve with you. We will also respond to any concerns or queries that your parent/carer might raise with us regarding your progress during your time with us.

If you are unwilling for us to liaise with your parents/carers you need to notify us in writing, and also nominate an alternative name and address as a contact point for college system. If you choose not to give permission for contacting parents/carers we will contact them to inform them of your decision.

Student Agreement

1. I have read and understood the Student Expectations.
2. I understand that if I do not keep to its terms then intervention action may be taken in order to best support me in my studies.

3. I understand that if my attendance is less than 95%* and/or I fail to hand in coursework, the College is entitled to either withdraw me from the course or charge for examination entries.
4. As a Bilborough student I agree to contact with my parent/carer as described above.

Signature **Date.....**

If you are unwilling for us to liaise with your parents/carers you need to notify us in writing, and also nominate an alternative name and address as a contact point for College system. If you choose not to give permission for contacting parents/carers we will contact them to inform them of your decision.

If things go wrong:-

We very much hope that things don't go wrong. We have very few rules and the vast majority of students want to do their very best and succeed whilst with us. However, if you do default on the Student Agreement, then you can expect some or all of the following to be implemented

- Your tutor/teachers will discuss progress with you and implement measures to support you to get back on track.
- Sanctions will be imposed by subject teachers / curriculum managers; for example compulsory attendance at a study room/ subject support session to complete outstanding work
- Continued failure to abide by the terms of the agreement will lead to Intervention and/or disciplinary measures being put in place
- Continued failure to meet expectations could result in you being asked to leave college
- You may be withdrawn from the examinations or asked to pay all/part of examination fees if attendance falls below 95%*
- Your parent/carer will be contacted and invited into College for a meeting.

*The Attendance Policy states that **NO** holidays are to be taken in term time and that college will require a doctor's note to cover long term sickness of more than 7 days.

COLLEGE TIMETABLE

| DAY | 8.50-10.20 | break | 10.40-12.10 | 12.10-1.00 | 1.00-2:30 | break | 2:40-4:10 |
|------------|-------------------|--------------|--------------------|-------------------|------------------|--------------|------------------|
| MON | A | | B | lunch | C | | D |
| TUES | E | | F | lunch | B | | A |
| WED | D | | C | lunch | Enrichment | | |
| THURS | F | | E | lunch | A | | B |
| FRI | C | | D | lunch | E | | F |

Bilborough College

2022-2023

Academic Year Calendar

| August 22 | | | | | | |
|-----------|----|----|----|----|----|----|
| Su | M | Tu | W | Th | F | Sa |
| | 1 | 2 | 3 | 4 | 5 | 6 |
| 7 | 8 | 9 | 10 | 11 | 12 | 13 |
| 14 | 15 | 16 | 17 | 18 | 19 | 20 |
| 21 | 22 | 23 | 24 | 25 | 26 | 27 |
| 28 | 29 | 30 | 31 | | | |

| September 22 | | | | | | |
|--------------|----|----|----|----|----|----|
| Su | M | Tu | W | Th | F | Sa |
| | | | | 1 | 2 | 3 |
| 4 | 5 | 6 | 7 | 8 | 9 | 10 |
| 11 | 12 | 13 | 14 | 15 | 16 | 17 |
| 18 | 19 | 20 | 21 | 22 | 23 | 24 |
| 25 | 26 | 27 | 28 | 29 | 30 | |

| October 22 | | | | | | |
|------------|----|----|----|----|----|----|
| Su | M | Tu | W | Th | F | Sa |
| | | | | | | 1 |
| 2 | 3 | 4 | 5 | 6 | 7 | 8 |
| 9 | 10 | 11 | 12 | 13 | 14 | 15 |
| 16 | 17 | 18 | 19 | 20 | 21 | 22 |
| 23 | 24 | 25 | 26 | 27 | 28 | 29 |
| 30 | 31 | | | | | |

| November 22 | | | | | | |
|-------------|----|----|----|----|----|----|
| Su | M | Tu | W | Th | F | Sa |
| | | 1 | 2 | 3 | 4 | 5 |
| 6 | 7 | 8 | 9 | 10 | 11 | 12 |
| 13 | 14 | 15 | 16 | 17 | 18 | 19 |
| 20 | 21 | 22 | 23 | 24 | 25 | 26 |
| 27 | 28 | 29 | # | | | |

| December 22 | | | | | | |
|-------------|----|----|----|----|----|----|
| Su | M | Tu | W | Th | F | Sa |
| | | | | 1 | 2 | 3 |
| 4 | 5 | 6 | 7 | 8 | 9 | 10 |
| 11 | 12 | 13 | 14 | 15 | 16 | 17 |
| 18 | 19 | 20 | 21 | 22 | 23 | 24 |
| 25 | 26 | 27 | 28 | 29 | 30 | 31 |

| January 23 | | | | | | |
|------------|----|----|----|----|----|----|
| Su | M | Tu | W | Th | F | Sa |
| 1 | 2 | 3 | 4 | 5 | 6 | 7 |
| 8 | 9 | 10 | 11 | 12 | 13 | 14 |
| 15 | 16 | 17 | 18 | 19 | 20 | 21 |
| 22 | 23 | # | 25 | 26 | 27 | 28 |
| 29 | 30 | 31 | | | | |

| February 23 | | | | | | |
|-------------|----|----|----|----|----|----|
| Su | M | Tu | W | Th | F | Sa |
| | | | 1 | 2 | 3 | 4 |
| 5 | 6 | 7 | 8 | 9 | 10 | 11 |
| 12 | 13 | 14 | 15 | 16 | 17 | 18 |
| 19 | 20 | 21 | 22 | 23 | 24 | 25 |
| 26 | 27 | 28 | | | | |

| March 23 | | | | | | |
|----------|----|----|----|----|----|----|
| Su | M | Tu | W | Th | F | Sa |
| | | | 1 | 2 | 3 | 4 |
| 5 | 6 | 7 | 8 | 9 | 10 | 11 |
| 12 | 13 | 14 | 15 | 16 | 17 | 18 |
| 19 | 20 | 21 | 22 | 23 | 24 | 25 |
| 26 | 27 | 28 | 29 | 30 | 31 | |

| April 23 | | | | | | |
|----------|----|----|----|----|----|----|
| Su | M | Tu | W | Th | F | Sa |
| | | | | | | 1 |
| 2 | 3 | 4 | 5 | 6 | 7 | 8 |
| 9 | 10 | 11 | 12 | 13 | 14 | 15 |
| 16 | 17 | 18 | 19 | 20 | 21 | 22 |
| 23 | 24 | 25 | 26 | 27 | 28 | 29 |
| 30 | | | | | | |


| May 23 | | | | | | |
|--------|----|----|----|----|----|----|
| Su | M | Tu | W | Th | F | Sa |
| | 1 | 2 | 3 | 4 | 5 | 6 |
| 7 | 8 | 9 | 10 | 11 | 12 | 13 |
| 14 | 15 | 16 | 17 | 18 | 19 | 20 |
| 21 | 22 | 23 | 24 | 25 | 26 | 27 |
| 28 | 29 | 30 | 31 | | | |

| June 23 | | | | | | |
|---------|----|----|----|----|----|----|
| Su | M | Tu | W | Th | F | Sa |
| | | | | 1 | 2 | 3 |
| 4 | 5 | 6 | 7 | 8 | 9 | 10 |
| 11 | 12 | 13 | 14 | 15 | 16 | 17 |
| 18 | 19 | 20 | 21 | 22 | 23 | 24 |
| 25 | 26 | 27 | 28 | 29 | 30 | |

| July 23 | | | | | | |
|---------|----|----|----|----|----|----|
| Su | M | Tu | W | Th | F | Sa |
| | | | | | | 1 |
| 2 | 3 | 4 | 5 | 6 | 7 | 8 |
| 9 | 10 | 11 | 12 | 13 | 14 | 15 |
| 16 | 17 | 18 | 19 | 20 | 21 | 22 |
| 23 | 24 | 25 | 26 | 27 | 28 | 29 |
| 30 | 31 | | | | | |

| August 23 | | | | | | |
|-----------|----|----|----|----|----|----|
| Su | M | Tu | W | Th | F | Sa |
| | | 1 | 2 | 3 | 4 | 5 |
| 6 | 7 | 8 | 9 | 10 | 11 | 12 |
| 13 | 14 | 15 | 16 | 17 | 18 | 19 |
| 20 | 21 | 22 | 23 | 24 | 25 | 26 |
| 27 | 28 | 29 | 30 | 31 | | |

| September 23 | | | | | | |
|--------------|----|----|----|----|----|----|
| Su | M | Tu | W | Th | F | Sa |
| | | | | | 1 | 2 |
| 3 | 4 | 5 | 6 | 7 | 8 | 9 |
| 10 | 11 | 12 | 13 | 14 | 15 | 16 |
| 17 | 18 | 19 | 20 | 21 | 22 | 23 |
| 24 | 25 | 26 | 27 | 28 | 29 | 30 |

- Holidays
- Last day for Year 13 (provisional)
- Last day for year 12s (provisional)
- Y13 Progression Day (all Y13 in college)
- Y12 Induction Days (Y12 students invited in for one of the 2 days)
- INSET - to be confirmed
- Start of normal timetable 



BILBOROUGH

SIXTH FORM COLLEGE

How to Succeed at Bilborough

The advice from our students past and present is valuable information! They have already done this and they are telling you what you must do to reach your untapped potential.

Practice Makes Perfect

Our courses are demanding. They demand that you put in hours of practice and get used to making mistakes.

LIFE is not
about falling
down, it's
about GETTING
BACK UP
AGAIN

F *First*
A *Attempt*
I *In*
L *Learning*

Never be afraid to fail
Anyone who is successful has failed many times before picking themselves up to try again.

Believe you can change

Your brain can change to take on more information if you let it so keep an open mind. Exams (at this level) are not passed by natural ability, you will get high grades from dedicating hours to practice and from challenging yourself.



Natural Talent

You might think that others in your classes are naturally more intelligent or gifted than you are. However, all the evidence shows that it is hard work and never giving up that are important at college and in life.

**“HARD WORK BEATS
TALENT WHEN TALENT
DOESN'T WORK HARD”**
-TIM NOTKE

Be who you are, become who you want to be